



Enapter UCM Kit

Enapter UCM Kit



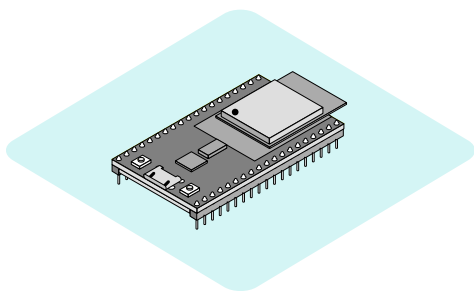
UCM Kit provides a full-stack IoT technology kit for the rapid development of connected applications. Designed for makers, students, and researchers to test, learn and teach IoT and Smart Energy.

Enapter UCM Kit is based on several important open-source and free-to-use components. This provides possibilities for personal technology development/testing and hardware prototyping all of which are extremely helpful for developing innovative, cost-efficient smart energy solutions for emerging markets.

UCM stands for Universal Communication Module which is an edge device used for data acquisition or control of a connected 3rd-party device on the one hand and delivery to/from Cloud or intelligent site controller over a secure wireless channel on the other hand. Support for a variety of devices is provided by a built-in Lua interpreter which allows to run Lua-based integration scripts called Enapter Blueprints.

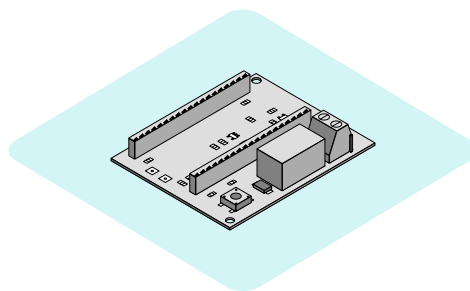
How UCM Kit Works?

Make your own hardware UCM



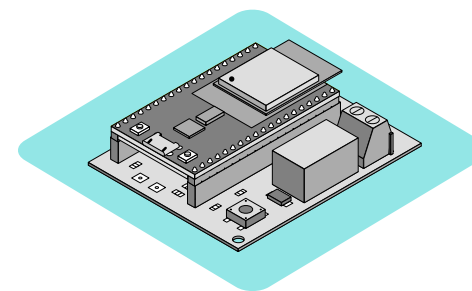
Purchase a common
Espressif ESP32-DevKitC board

[More info](#)



Order and assemble an ENP-KIT shield
board from a variety of available open-
source documentation from GitHub

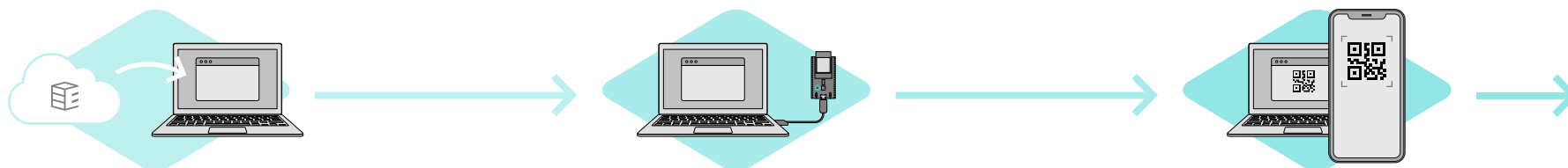
[More info](#)



Assemble boards together and power
them using your computer USB port

How UCM Kit Works?

Install IoT Firmware on ESP32 MC

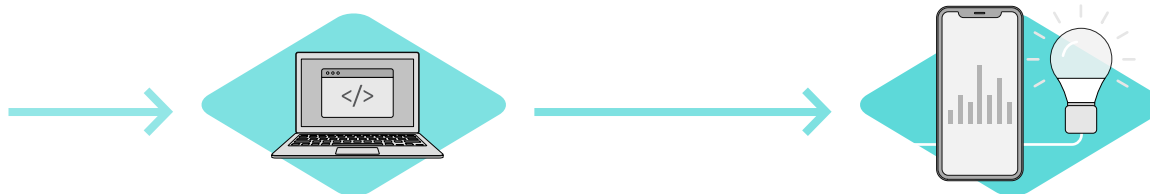


Download Enapter UCK Kit Flasher from:

flasher.enapter.com

Run it and install a suitable firmware depending on which ENP-KIT shield board you are using

Connect UCM to the Enapter Cloud PaaS using Mobile App and a QR code from Flasher App



Develop your own Enapter Blueprint or use one of the already available from Enapter Marketplace

www.marketplace.enapter.com

Connect your 3rd party device to an ENP-KIT shield board and start collecting data and controlling your device via our Mobile App

Why Choose UCM Kit for Prototyping Your IoT Energy Project?



Creative approach

Pocket-sized ENP-KIT shield boards have different inputs and outputs for a wide range of applications.



Value-added services

Simplify customer service, troubleshooting, and R&D for your existing products. Integrate your devices into a reliable, state-of-the-art ecosystem.



Lighthouse for your data lake

Helps you to analyse energy data, know your energy system better, optimise energy usage and employ automatic control.



Fast-learning and self-learning approach

Lua programming language is easy to learn, making it perfect for beginners and students.



Cost-effective solution and time to market

No need to invest time and money into expensive hardware development and testing of a low-level solution: hardware is based on a worldwide available electronics base and a firmware developed by an industry-leading and well-known company you can trust.



Responsive support

Open-source, community-supported solution using modern platforms like Discord and GitHub with optional enterprise-level support from platform creators.



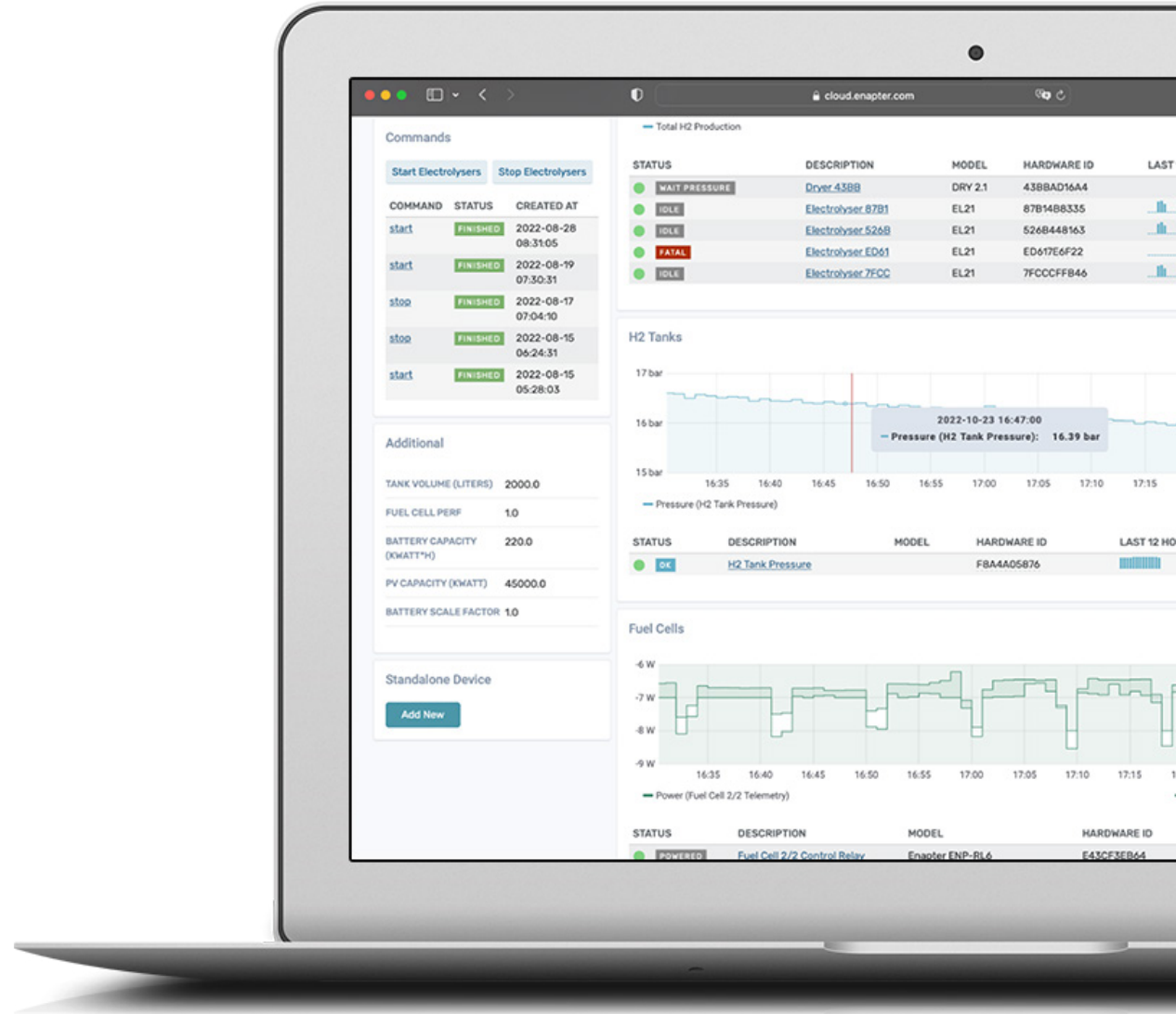
Extensive development tools

A wide range of documentation, tutorials, and cross-platform development tools; sky is the limit for your first project

Enapter Cloud



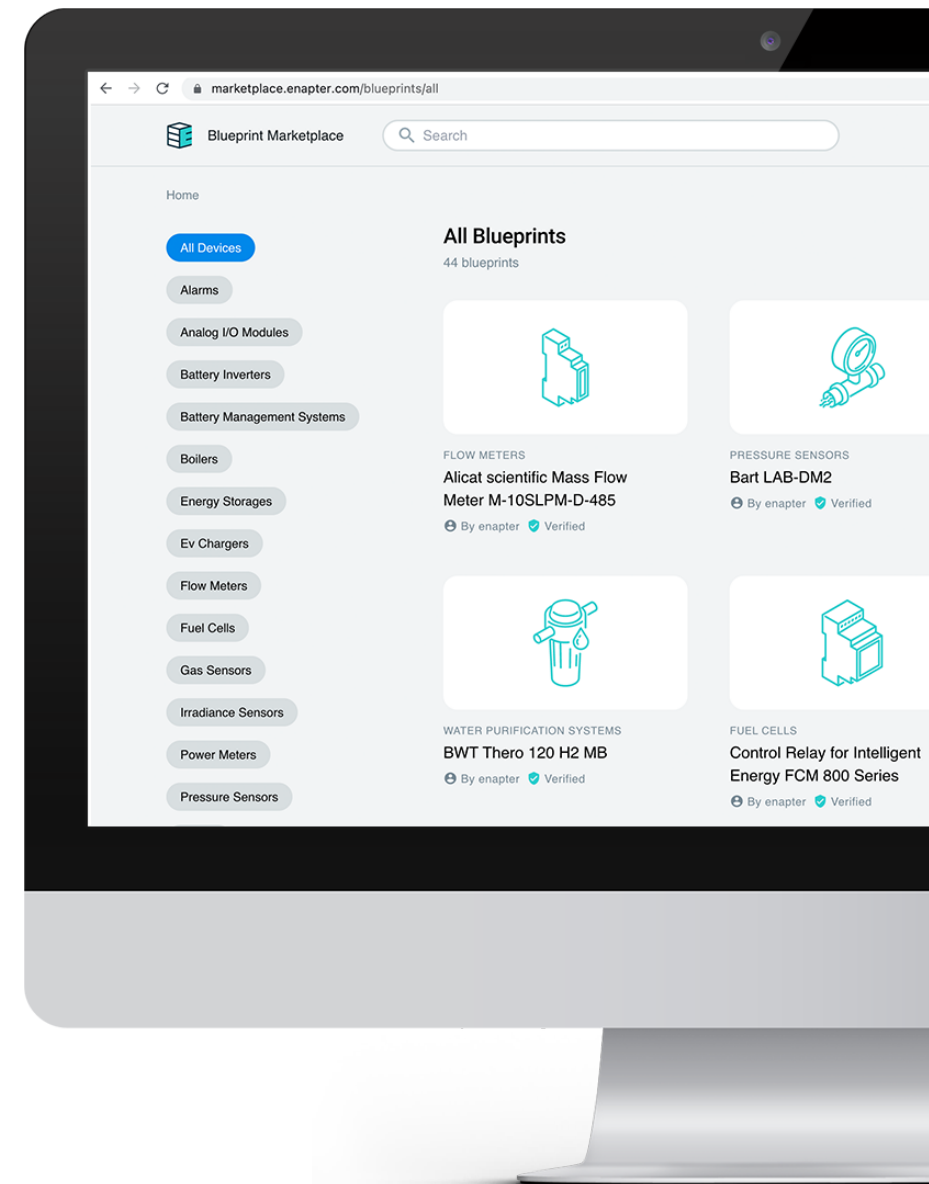
- Overall management and analytics of your sensors and device fleet.
- Efficient and secure long-term storage for data with 1s granularity.
- Notification and reporting instruments to ensure responsiveness, accountability, and compliance.
- Customisable Dashboards.
- Integration with Open Source Grafana.
- Machine Learning ready.



Enapter Blueprint Marketplace

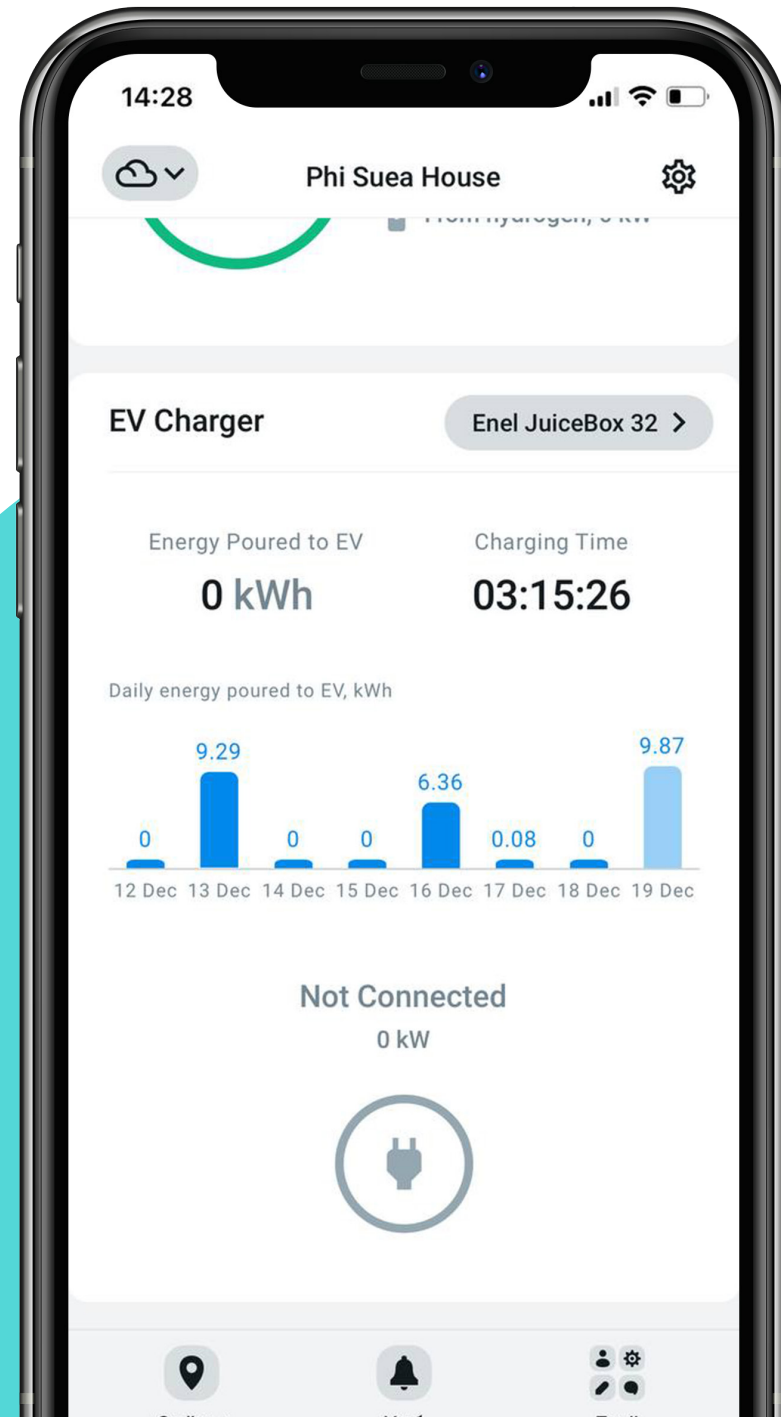


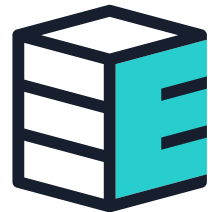
- An open-source collection of device integrations available on GitHub.
- Apache 2.0 / MIT License.
- Developed with YAML and Lua.
- Instant monitoring and control with our free to use Mobile App and Cloud dashboard.
- Contributions are welcome.



The App

- Enapter provides a free Mobile App for Android and iOS.
- Convenient monitoring and control of your devices through any network, anywhere in the world.
- Interactive Dashboards and Charts.
- Quick Commands and Automation Actions.
- Integration with Blueprint Marketplace.





Enapter

Apache 2.0 / MIT License

go.enapter.com/ucmkit-enpkit

support@enapter.com